

Regional Overview: Country Action plans and Progress on WinS Enabling Environment

Evariste Kouassi Komlan
Regional Adviser, WASH
UNICEF EAPRO



Session Objective



Regional
Overview of
Progress on
6th ILE



Critical Challenges
(Bottlenecks) **remain** in the
WinS Enabling
Environment to further
strengthen WinS in
respective countries

Country
Action Plan
Updates



WinS Action Plan

Country : xxxxx

Policy and Planning

-
-
-

Budget and Expenditures

-
-
-

Monitoring & Evaluation:

-
-

Implementation Arrangements

-
-

Capacity Development:

-
-

Evolution of ILE on WinS



2012
Philippines
Introduction
to Bottleneck
Analysis

2014
Vientiane
Use of
Bottleneck
Analysis with
additional
guidance

2016 Jakarta
Focus on
WinS EE
Enablers

2013 New
Delhi
Use of MoRES
Determinants
for Country
Action
Planning

2015 Sri Lanka
Identified
WinS Enabling
Environment
Enablers

2017 Nay Pyi
Taw Traffic
Light
monitoring in
WinS EE

2019 Manila
Traffic Light
Monitoring
on WinS EE
Enablers

What did we commit in 2017 ILE?



Strengthening WinS Monitoring & SDG and EMIS

WinS implementation at Scale and Three Star Approach: Operation and Maintenance

Menstrual hygiene management & Gender

WinS as a human right for all children

Improved WinS implementation quality

unicef

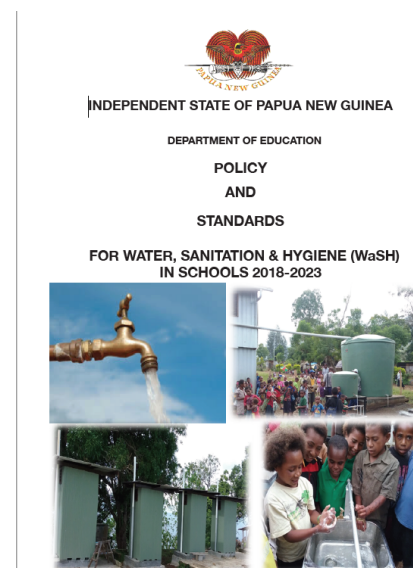
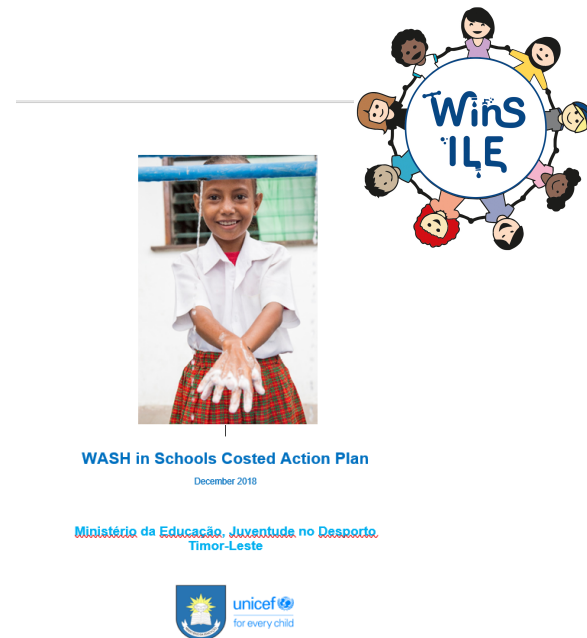


Outcome Document
6th WASH in Schools International Learning Exchange
27 November to 1 December 2017, Nay Pyi Taw, Myanmar

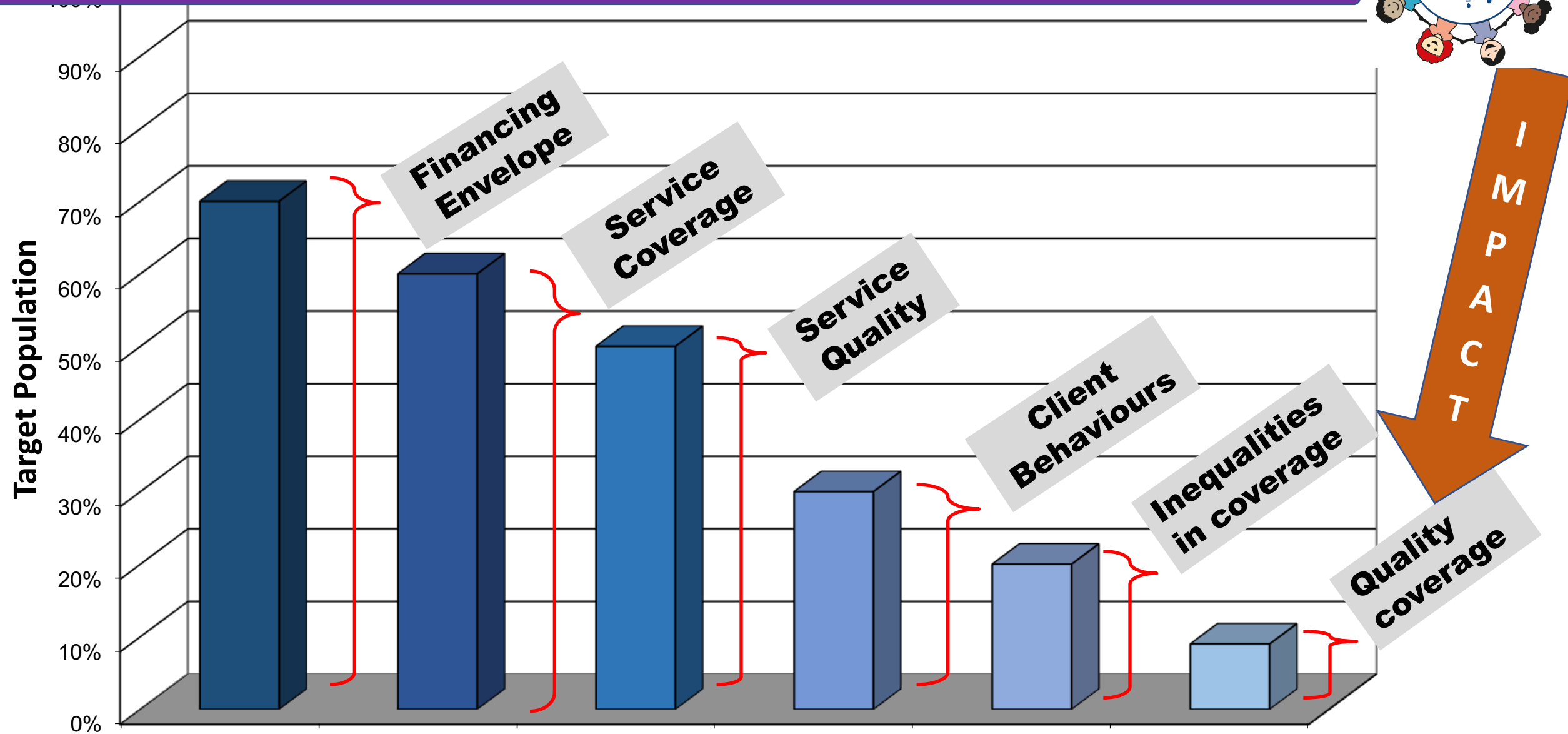


How did we progress?

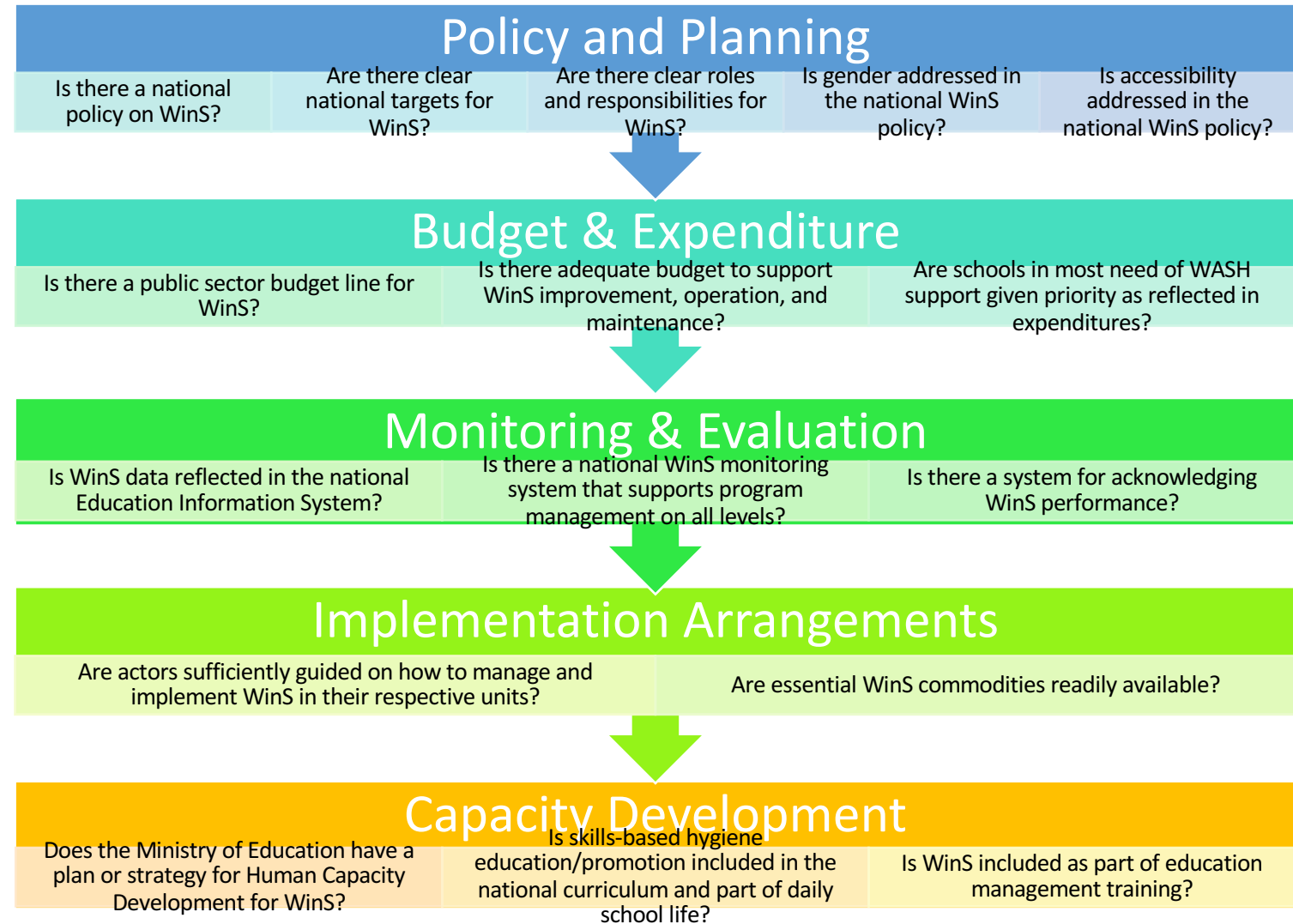
- Overall, **very good progress** has been observed in **policy and planning** EE building block in most countries;
- Significant progress has been noted in **the monitoring and evaluation domain** with many countries reporting good EMIS;
- Good Progress has also been made in **capacity development with hygiene education integrated in national curriculum** in most countries;
- **Implementation arrangements is constrained** in most countries with a lack of essential commodities for WinS ;
- **Budget and expenditure** continues to be the most constrained in many countries;



Why Enabling Environment for Wins?



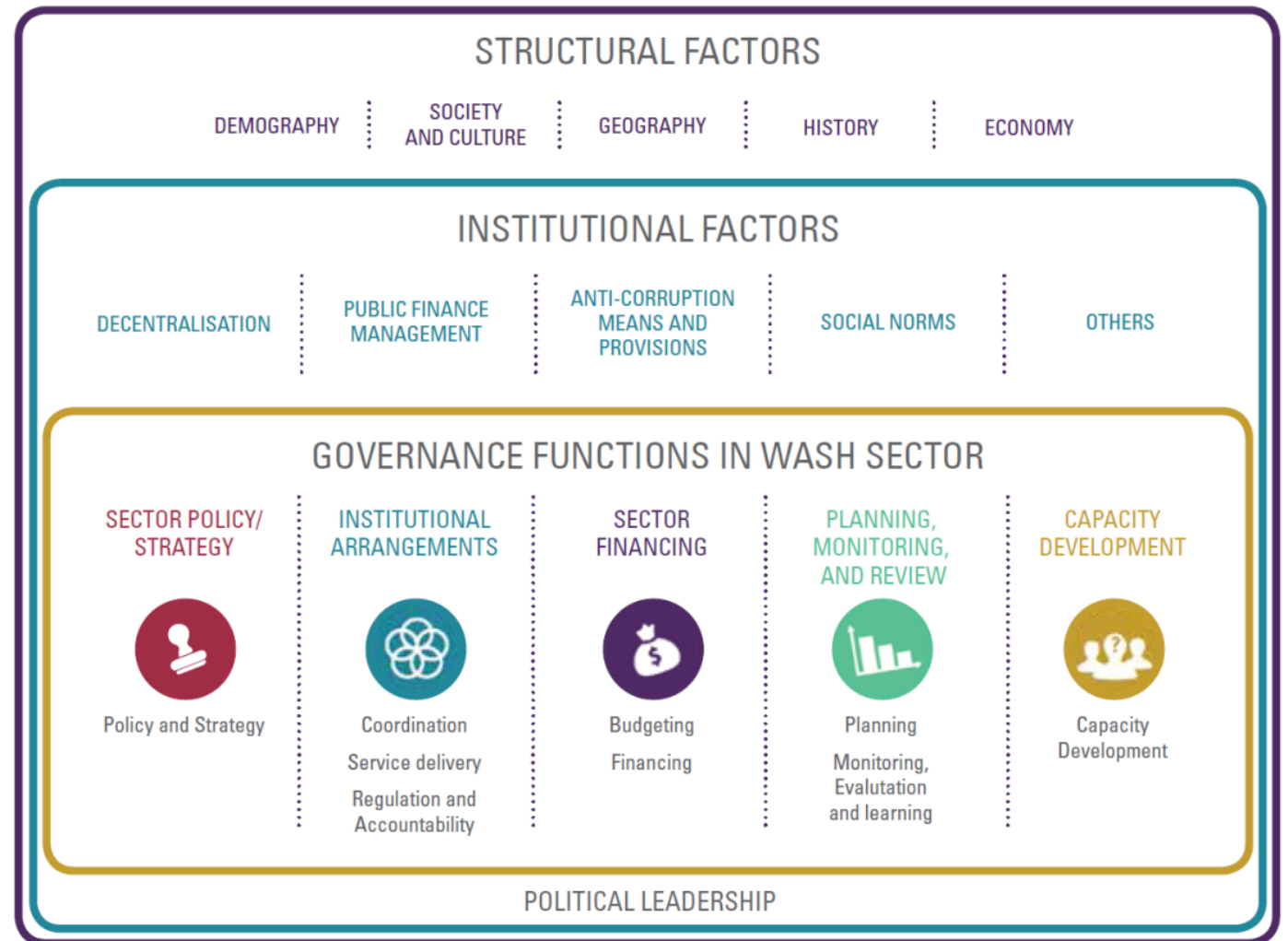
WinS Enabling Environment Building Blocks



Basis of the Analysis



- Major assessment areas:
 - Five EE building blocks
 - 16 indicators
 - 19 Country Action Plans



Regional Progress Overview on WinS EE BB



5 countries met the target

2 countries met the target

2 countries met the target

1 Country met the target

1 Country met the target

Sector Policy & Strategy

Budget & Expenditure

Monitoring & Evaluation

Implementation Arrangements

Capacity Development

Regional Progress Scorecard on WinS EE



WinS Key Enablers and Indicators		Cambodia			China			DPRK		Fiji			Indonesia			Lao PDR			Myanmar			PNG			Philippines			Timor Leste			Vanuatu			Vietna m	Afghanistan	Bangladesh			Bhutan			India			Nepal			Pakistan			Sri Lanka		
		###	###	###	###	###	###	###	###	###	###	###	###	###	###	###	###	###	###	###	###	###	###	###	###	###	###	###	###	###	###	###	###	###	###	###	###	###	###	###	###	###	###	###	###	###	###	###					
Policy & Planning	Is there a national policy on WinS?	4	4	4	3	3	3	3	2	4	3	3	2	3	3	2	3	3	2	3	2	4	3	4	4	4	4	4	4	2	3	2	1	4	2	3	3	2	3	3	3	2	3	4	2	2	3	2	2	2			
	Are there clear national targets for WinS?	2	2	4	2	3	3	2	2	4	3	3	1	2	3	2	2	2	2	3	4	3	4	4	4	3	3	3	2	2	2	2	3	2	2	1	3	3	3	3	3	3	2	3	6	2	2	4	2	3	3		
	Are there clear roles and responsibilities for WinS?	3	3	3	3	3	3	3	2	2	2	3	3	2	2	3	3	3	3	2	3	3	4	3	4	4	2	2	2	2	3	3	3	3	2	2	2	2	2	2	2	3	2	2	2	2	3	4	2	3	3		
	Is gender addressed in the national WinS policy?	3	3	3	3	3	3	3	3	2	2	2	3	2	2	2	2	2	2	3	2	3	3	4	4	4	3	3	3	3	3	3	3	1	2	3	2	3	1	3	3	3	3	3	3	3	3	3	3	3	3		
	Is accessibility addressed in the national WinS policy?	2	2	3	3	3	3	4	2	2	2	3	4	4	2	2	2	2	2	3	2	2	3	3	4	4	3	3	3	2	3	2	2	2	2	2	2	2	2	2	2	3	3	3	3	3	3	3	3	2	2	2	
Budget & Expenditure	Is there a public sector budget line for WinS?	2	2	3	2	2	3	2	2	2	4	2	2	3	2	2	2	2	2	2	2	1	2	3	3	4	2	2	2	2	2	2	2	2	2	1	3	4	3	3	2	2	2	2	2	2	2	2	2	2	2		
	Is there adequate budget to support WinS improvement, operation, and maintenance?	4	4	2	3	3	3	2	2	3	3	3	2	2	2	1	1	2	1	2	2	2	3	3	3	3	3	3	3	3	1	3	3	1	2	1	3	2	2	2	2	2	2	2	2	2	2	2	2	2	2		
	Are schools in most need of WASH support given priority as reflected in expenditures?	2	2	3	3	3	3	2	2	4	3	3	1	1	2	2	2	2	2	2	2	2	2	3	3	3	3	3	3	2	3	1	2	2	4	2	2	3	3	3	3	3	3	3	2	2	2	2	2	2	2		
Monitoring & Evaluation	Is WinS data reflected in the national Education Information System?	2	3	3	3	2	2	2	2	3	4	3	3	3	2	2	2	2	2	3	3	3	4	4	3	4	4	2	2	2	2	2	2	2	1	2	2	3	3	3	3	3	3	2	2	2	2	2	2	2	2		
	Is there a national WinS monitoring system that supports program management on all levels?	2	2	2	2	2	2	2	2	4	2	3	2	2	2	1	2	2	2	2	2	1	2	2	3	4	4	3	1	1	1	1	1	2	2	3	2	2	2	2	2	2	2	2	2	2	2	2	2	2	2	2	
	Is there a system for acknowledging WinS performance?	2	2	2	3	3	2	4	2	2	3	3	1	1	1	1	2	2	2	2	2	1	2	1	3	4	4	2	2	2	2	2	3	3	2	3	1	3	4	2	2	3	3	3	3	3	3	3	3	3	3	3	
Implementation Arrangements	Are actors sufficiently guided on how to manage and implement WinS in their respective units?	2	2	3	2	3	2	2	2	4	3	3	2	2	3	2	2	2	1	2	2	2	3	2	4	4	2	2	2	2	2	2	3	2	3	2	2	2	2	2	2	2	2	2	2	2	2	2	2	2	2	2	
	Are essential WinS commodities readily available?	3	3	2	3	3	3	2	2	2	2	3	2	2	2	3	2	2	2	2	2	1	1	1	3	3	3	3	3	3	3	2	3	3	1	4	2	3	3	3	2	2	2	2	2	2	2	2	2	2	2	2	
Capacity Development	Does the Ministry of Education have a plan or strategy for Human Capacity Development for WinS?	2	2	3	2	3	3	3	2	2	3	1	2	2	2	2	2	2	2	2	2	1	2	2	4	4	3	3	3	3	2	2	3	2	3	3	2	3	3	2	2	2	2	2	2	2	2	2	2	2	2	2	
	Is skills-based hygiene education/promotion included in the national curriculum and part of daily school life?	2	2	3	2	2	2	2	2	4	2	3	2	2	2	3	3	3	2	2	3	3	3	4	4	3	3	3	3	2	2	2	2	2	2	2	2	2	2	2	2	2	2	2	2	2	2	2	2	2	2	2	
	Is WinS included as part of education management training?	2	2	3	2	3	2	2	2	4	2	3	1	1	2	2	2	2	2	2	3	3	2	2	2	2	3	3	2	2	2	2	2	2	2	1	4	2	2	3	3	3	2	2	2	2	2	2	2	2	2	2	

4= Complete

3= Good Progress/On-track,

2= Constrained

1= No Progress

Source: Country ILE Action Plan updates, Nov. 2019

Notable Country Innovations:



- **MOOCs for WinS Capacity** Development at scale (**Philippines**),
- WinS is a pillar of "OK sa DepEd" (a convergence of priority programs for school health in Philippines)
- **National and Regional WinS Learning Exchanges** (Philippines)
- Piloting of several innovations on WinS (e.g., **nudges, MHM lesson plans, tools for Operation and Maintenance**)
- Introduction of **portable handwashing stations to the Ministry of Health (Fiji)**
- **Guidelines developed for local executives** (Mayor, Head of Education) to achieve 1 star and School-based management guidelines (**Indonesia**)
- Mobile data **collection tool tested in for WinS monitoring (Myanmar)**
- **MHM facilities in school toilet for girls (Timor Leste)**
- Low cost handwashing stations based on ROSA regional Innovation Challenge now implemented in 4 districts and upgrading pit/aqua privy toilets to hygienic pour flush toilet using STAO pans (**Bhutan**)
- Good practices of other WinS approaches (**Three star/Blue school/7 FATS**) incorporated in Three Star approach to WinS programming and DRR/Emergency preparedness (**Nepal**)
- **Improved "existing" school accreditation system introducing specific parameters** for WASH operation and maintenance and Students' competencies & practices (**Sri Lanka**)

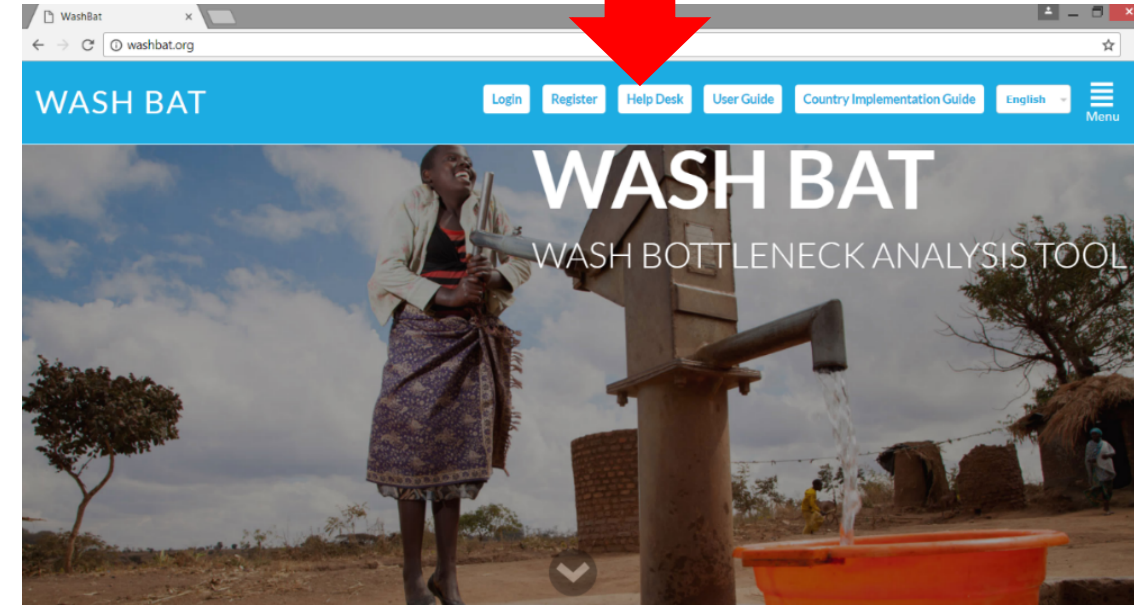
Way Forward



User Resources



- Implementation of WASH Bottleneck Analysis on WinS;
- Mainstreaming of WinS within the Education sector's review processes like Joint Action Review (JAR);
- Increased advocacy for budget and financing for WinS sustainability and at scale implementation;
- Engagement of Private Sectors for continuity of supplies and market access



www.washbat.org

Thank You

